

Maps of Western South Dakota
and Northeastern Wyoming

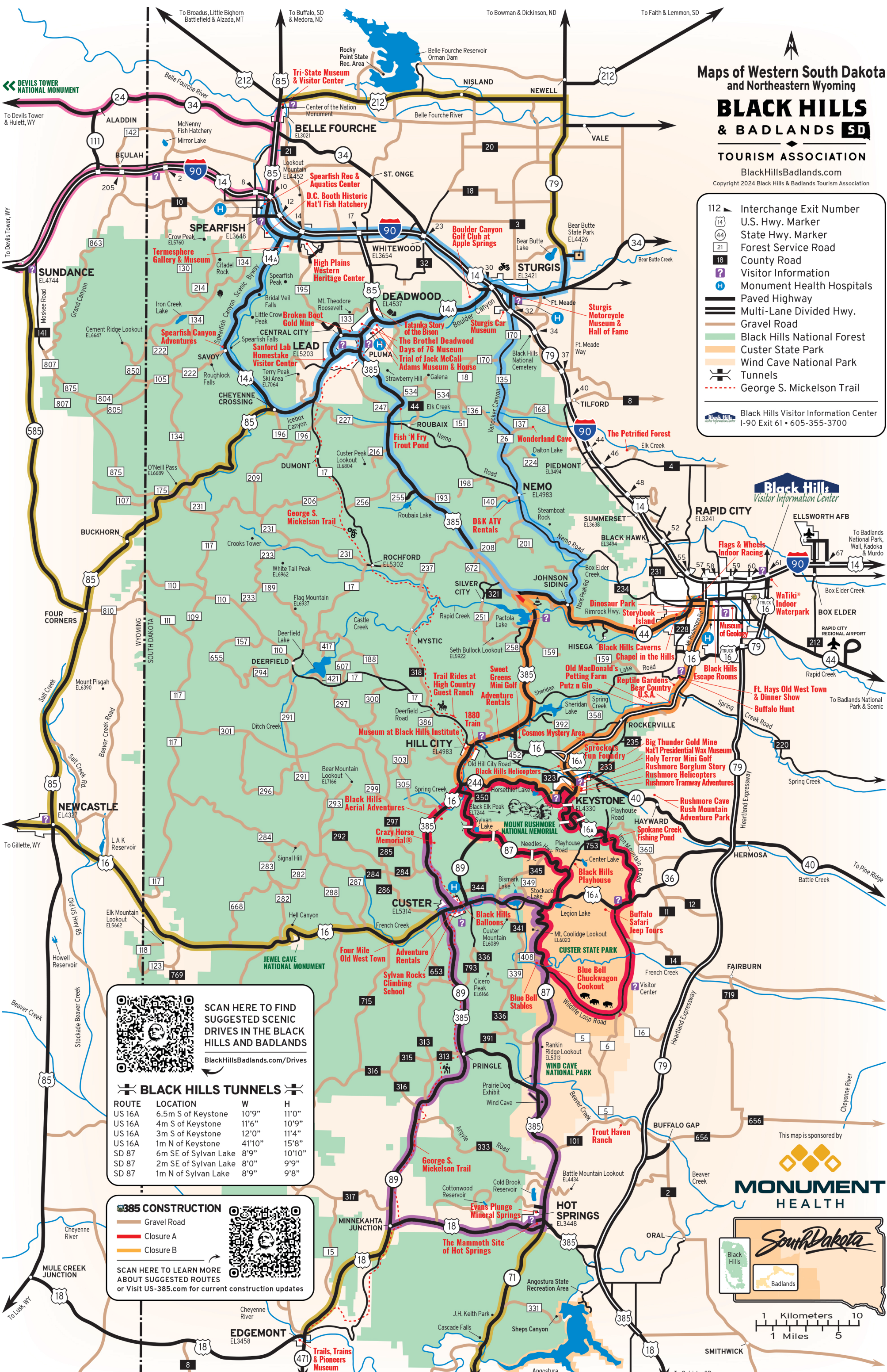
BLACK HILLS & BADLANDS SD

TOURISM ASSOCIATION

BlackHillsBadlands.com

Copyright 2024 Black Hills & Badlands Tourism Association

112 Interchange Exit Number
 14 U.S. Hwy. Marker
 44 State Hwy. Marker
 21 Forest Service Road
 18 County Road
 ? Visitor Information
 H Monument Health Hospitals
 Paved Highway
 Multi-Lane Divided Hwy.
 Gravel Road
 Black Hills National Forest
 Custer State Park
 Wind Cave National Park
 Tunnels
 George S. Mickelson Trail
 Black Hills Visitor Information Center
 I-90 Exit 61 • 605-355-3700



SCAN HERE TO FIND SUGGESTED SCENIC DRIVES IN THE BLACK HILLS AND BADLANDS
 BlackHillsBadlands.com/Drives

BLACK HILLS TUNNELS

ROUTE	LOCATION	W	H
US 16A	6.5m S of Keystone	10'9"	11'0"
US 16A	4m S of Keystone	11'6"	10'9"
US 16A	3m S of Keystone	12'0"	11'4"
US 16A	1m N of Keystone	41'10"	15'8"
SD 87	6m SE of Sylvan Lake	8'9"	10'10"
SD 87	2m SE of Sylvan Lake	8'0"	9'9"
SD 87	1m N of Sylvan Lake	8'9"	9'8"

385 CONSTRUCTION

- Gravel Road
- Closure A
- Closure B

SCAN HERE TO LEARN MORE ABOUT SUGGESTED ROUTES or Visit US-385.com for current construction updates

